



Roof Mount Solar Hot Water with electric boost

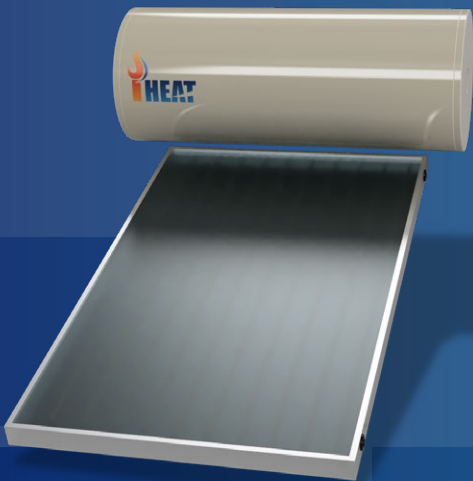
Improve the energy rating
of your home and **SAVE!**

**Use the sun's unlimited FREE energy
to provide up to 80% of your hot water.**

iHeat's roof mount solar water heaters are traditional close-coupled thermosiphon systems, combining roof-mounted solar collectors and storage tanks, which are ideal for applications that are short of available ground space. Roof mount systems are highly efficient and use natural thermal convection to circulate hot water from the collectors to the tank without the need for electric pumps.



Many options to suit your hot water needs



iHeat's roof mount systems utilise single or twin panel configurations depending on hot water requirements:

- Single panel suited for small to medium hot water demand
- The ideal size for areas exposed to high solar contribution or low hot water demand
- Greater flexibility with tight roof spaces as collector can be mounted horizontally or vertically
- Twin panel suited for medium to high hot water demand

Smarter Electric Booster

Electric-boosted models feature an in-tank heating element that activates only when the stored water temperature drops below a set temperature, minimising your energy costs to heat your water.



Water tanks built for Australian conditions

Roof mount systems feature iHeat's world-class storage tanks in a 300 litre capacity. iHeat tanks have evolved from **decades of design refinement** and feature high-quality construction, insulation and coating for a long service life in Australia's harsh conditions.

iHeat's roof mount open-loop range offers maximum performance and solar contribution via direct heat transfer.

Warranty Information	
Tank & Collectors	5 yr parts and labour
Electrical & Parts	1 yr parts and labour

Specifications for 300 L Tank		
System Dimensions	System length (Tank + Collector)	2648 mm
	Width (Tank only)	1539 mm
	Diameter (Tank only)	648 mm
	Weight (Tank only)	97 kg
Auxiliary Boost Options	Electric 2.4 (kW) Element	
System Type	Open-loop	

Collector Specifications	Width (mm)	Length (mm)	Depth (mm)	Weight (kg)	Aperture Area (m ²)
CSG25 x 1	1247	2000	95	46	2.5
CSG20 x 2	1000	2000	95	37	2.02

Why choose iHeat hot water systems

- Reduce water heating costs by up to 90%
- Storage tanks and collectors manufactured to ISO 9001:2015 and AS/NZS 4801:2001 quality standards
- Nationwide sales and service networks

Other quality iHeat products include:

- Ground Mount solar hot water systems
- Evacuated tube solar hot water systems
- Continuous flow gas water heaters
- Heat pumps



TEL: (08) 6222 6676
www.ureco.com.au



© Copyright to iHeat/URECO 2020



WaterMark

iHeat hot water systems have WaterMark approval to the Australian Standards, meeting the requirements for installation into the reticulated water supply.